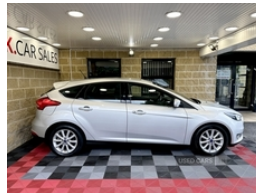


Ford Focus 2.0 TDCi Titanium 5dr | Dec 2017
FINANCE FROM £ 159 PER MONTH WITH £ 0 DEPOSIT

£7,295



2017 Ford Focus 2.0 TDCi Titanium
2.0TDCi Diesel 150BHP 6 speed manual
95K miles with service history
MOT 27/08/2025
3 months warranty
£190 Road TAX
Just fully serviced
Trade ins welcome

Dual zone air conditioning, Bluetooth connectivity,
CD/AUX/Bluetooth audio, SAT NAV, touch screen, electric
windows and mirrors, parking sensors, cruise control, auto lights
and wipers, multifunction steering wheel, ISOFIX, 16" alloy
wheels

Finance this car from £159 per month with £0 deposit

Walkaround video available

£7295

ROI customers
VRT calculated at only €
NOx levy €

PM, text or call 07724336181

J.K. CAR SALES
84 Cunninghams Lane
Dungannon
BT71 6BX

#ford #fordfocus #jkcarsales #usedcarsni

Vehicle Features

'Quickclear' heated windscreen/heated washer jets, 3 spoke

Miles:	95000
Fuel Type:	Diesel
Transmission:	Manual
Colour:	Silver
Engine Size:	1997
CO2 Emission:	105
Tax Band:	Petrol/Diesel (£195 p/a)
Body Style:	Hatchback
Insurance group:	20E
Reg:	LL67SRY

Technical Specs

DIMENSIONS	
Length:	4358mm
Width:	1823mm
Height:	1484mm
Seats:	5
Luggage Capacity (Seats Up):	316L
Gross Weight:	2050KG
Max. Loading Weight:	635KG

PERFORMANCE & ECONOMY	
Fuel Consum. (Urban Cold):	60.1MPG
Fuel Consum. (Extra Urban):	76.4MPG
Fuel Consum. (Combined):	70.6MPG
Fuel Tank Capacity:	60L
Number Of Gears:	6 SPEED
Top Speed:	130MPH
Acceleration 0-100 km/h:	8.8s
Engine Power BHP:	147.5BHP

leather steering wheel, 6 speakers, 8" colour touch screen, 60/40 split back and cushion rear seats with 2 height adjustable headrests, ABS+Electronic Brake force Distribution, Active city stop, advanced voice control, Auto dimming rear view mirror, Automatic headlights, Automatic rain sensing wipers, Aux input, Bluetooth connection, Body colour bumpers, Body colour door handles, Body colour door mirrors, Body colour rear spoiler, Centre console storage box/armrest, Chrome finish on upper door line, Chrome radiator grille and surround, Cruise control + speed limiter, Diesel particulate filter, Digital clock, Driver's seat with adjustable lumbar support, Driver airbag, Dual electronic automatic temperature control air conditioning - CFC-free, Easy fuel capless refuelling system, Eco mode, Electric adjustable heated door mirrors, Electric boot release, emergency assistance, ESP with traction control + emergency brake assist, Front fog lights, Front inertia reel height adjustable seatbelts with pre-tensioners, Front passenger airbag, Front side airbags, Front variable intermittent wipers with electric wash, Heated rear window, Height adjustable front headrests, Hill start assist, Immobiliser-Passive Anti-Theft System (PATS), Isofix child seat preparation, Key free system, LED daytime running lights, MyKey system, PAS, Passenger seat height/lumbar adjustment, Reach + rake adjustable steering column, Rear parking sensor, Remote central double locking, Side curtain airbags, Sports style front seats, Steering column with mounted audio controls, SYNC 2 DAB radio/CD, Tailgate wash/wipe, TFT cluster screen, Thatcham Cat.1 alarm, Three rear inertia reel lap/diagonal seatbelts, Torque vectoring brake, Trip computer, Tyre pressure monitoring system, USB connection